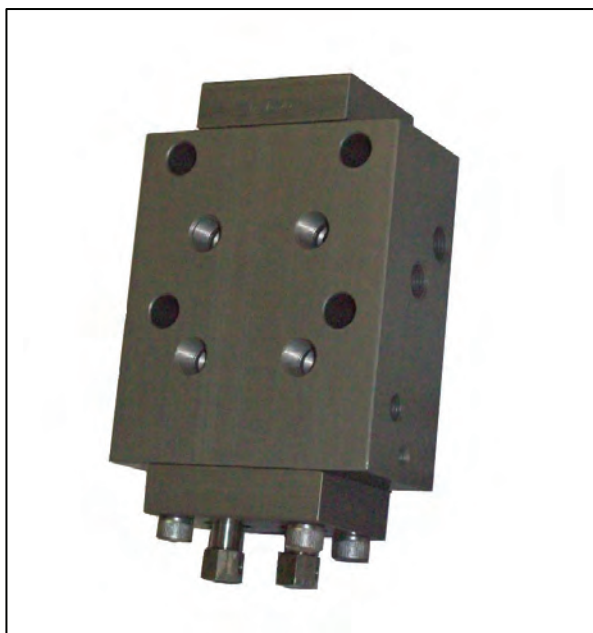
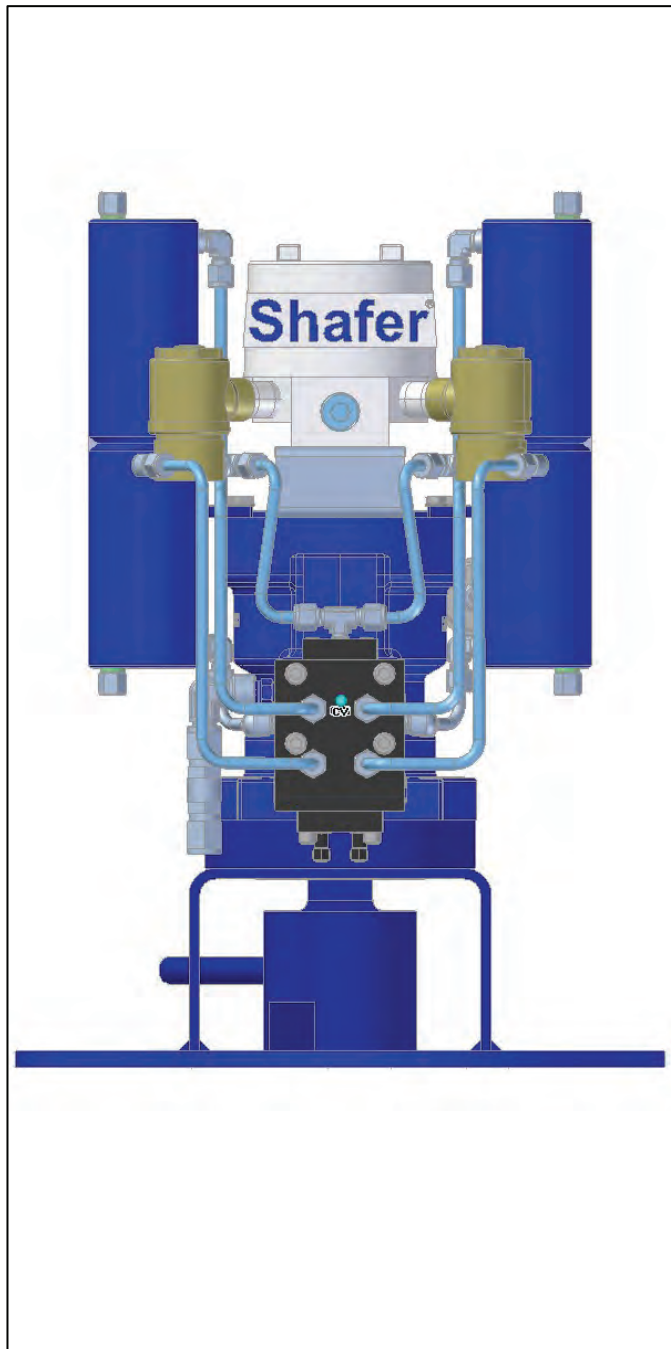
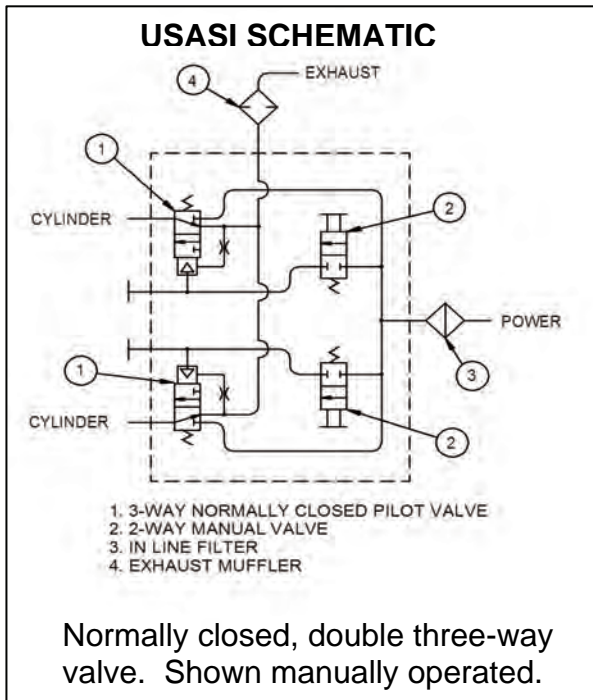


# 1/8" POPPET BLOCK CONTROL MAINTENANCE AND SERVICE MANUAL

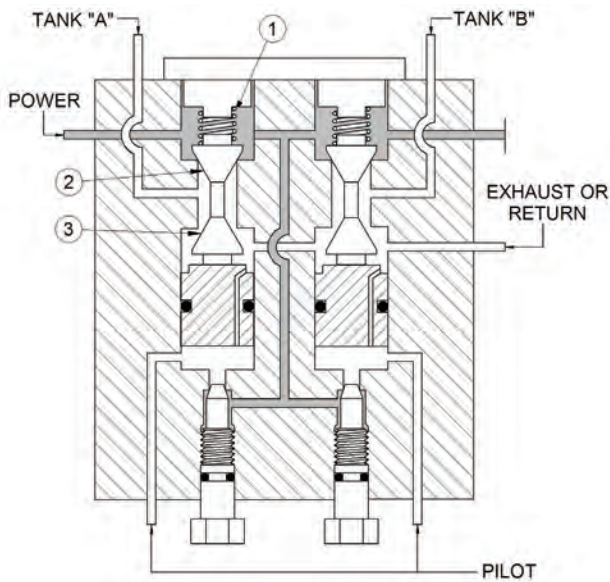


## 1/8" Poppet Block Control

# POPPET BLOCK GAS OR OIL FLOW

## INTRODUCTION

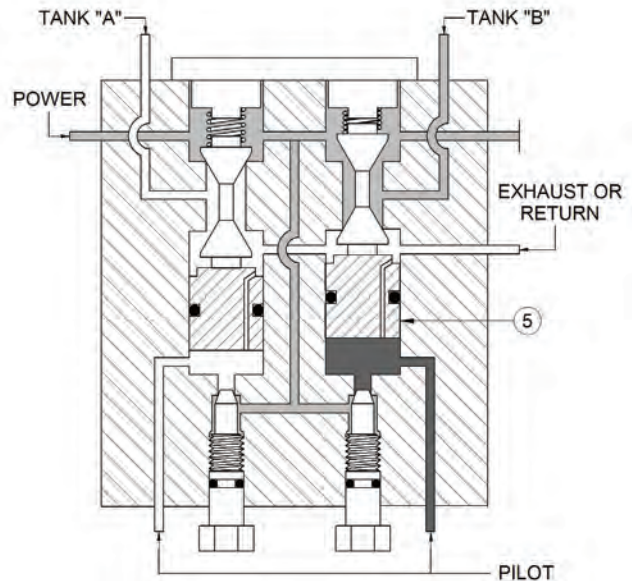
The poppet block is the heart of most Shafer control systems. A double three-way, manual and pilot actuated, control valve is designed to provide selective directional operation of Shafer actuators. The poppet block control may direct power gas to a set of gas/hydraulic tanks (generating hydraulic pressure for powering valve actuators), or it may direct central hydraulic system pressure directly into a valve actuator. It is engineered to provide reliable and durable operation and toleration of contaminants in the power source.



**FIGURE 1**

## BASIC CONSTRUCTION

The poppet block consists of a double three-way ported valve body containing two sets of inexpensive, easily replaced nylon poppets to provide tight sealing, poppet springs, push pins, manual needle screw override assemblies and pilot pistons for remote operation.



**FIGURE 2A**

## OPERATION

### FIGURE 1 – NEUTRAL POSITION

Spring compression (1) and power gas force the power poppets (2) on their respective seats and simultaneously hold exhaust poppets (3) in the open position via interconnecting poppet pins. Tank porting is open to exhaust.

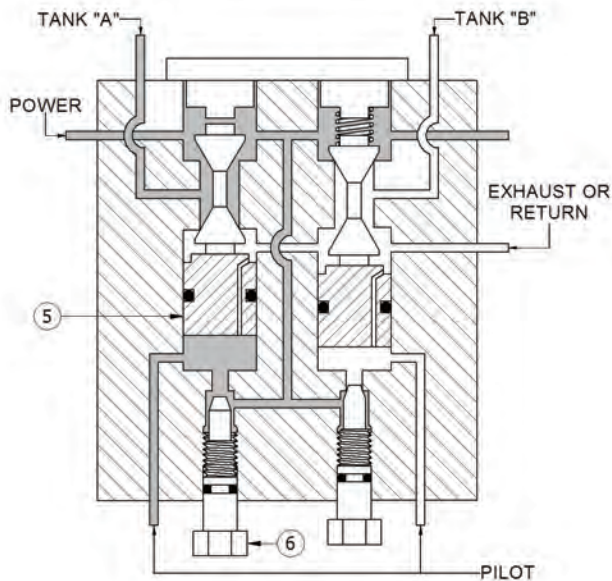
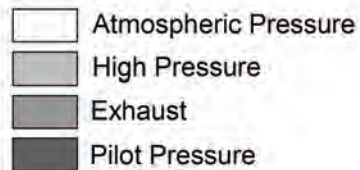
### FIGURE 2A – PILOT ACTIVATION

Pilot pressure to the pilot piston (5) illustrates force applied to the piston seating the exhaust poppet and simultaneously unseating the power poppet. Power gas is directed through tank port "B".

**NOTE:** Pilot pressure to the opposite pilot piston shown in Figure 2A will activate the opposite set of poppets and direct power gas to tank port "A".

**NOTE:** Pilot pistons are equipped with an orifice in order to vent the pilot pressure and allow the control to neutralize after stroking an actuator.

# POPPET BLOCK GAS OR OIL FLOW



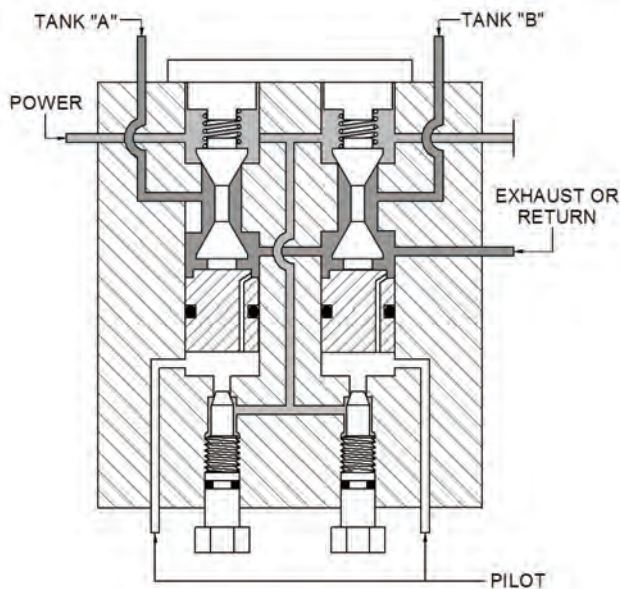
**FIGURE 2 B**

## FIGURE 2B – MANUAL ACTIVATION

Opening the Needle Screw Manual Override (5) will admit power pressure to the pilot piston (5) seating the exhaust poppet and simultaneously unseat the power poppet. Power gas is directed through the tank port "A".

**NOTE:** Turn Needle Screw counter-clockwise to open, clockwise to close.

**CAUTION:** Do Not over torque Needle Screws. For positive shut-off, use a conventional 3/8" open or box end wrench.



**FIGURE 3**

## FIGURE 3 – NEUTRALIZATION

Closing the Needle Screw Manual Override will allow the compressed poppet spring and power gas to reseat the power poppet and simultaneously unseat the exhaust poppet. Power gas pressure remaining in the gas/hydraulic tank is now vented through port "B" to the exhaust, thus neutralizing tank and actuator pressures.

# 1/8" Poppet Block Control

## BASIC CHECK-OUT PROCEDURES

The following two checks can verify the proper working functions of the Shafer Poppet Block/ Failure of either of these procedures may result in operating problems with the valve actuator. This description is for gas service, but the unit can also be used in hydraulic service.

### CHECK NO. 1

There should be zero leakage throughout the control system

In the neutralized position there should be zero leakage from the exhaust port.

Power gas leakage is usually attributed to debris lodged between the power poppet and seat.

### CHECK NO. 2

Open the Manual Needle Screw Manual Override and stroke the actuator partially open or closed.

**NOTE:** The Manual Needle Screw for open and close are indicated on the attached tag.

After stroking the actuator partially open or closed, close the Needle Screw thus exhausting the gas/hydraulic tank.

After gas/hydraulic tank is completely exhausted, check the exhaust port for any gas leakage.

**NOTE:** The exhaust port should be free of any restrictions or piping size reductions less than 1/8, unless factory supplied. (Standard factory supplied units will include a high pressure Exhaust Muffler.)

## BILL OF MATERIAL

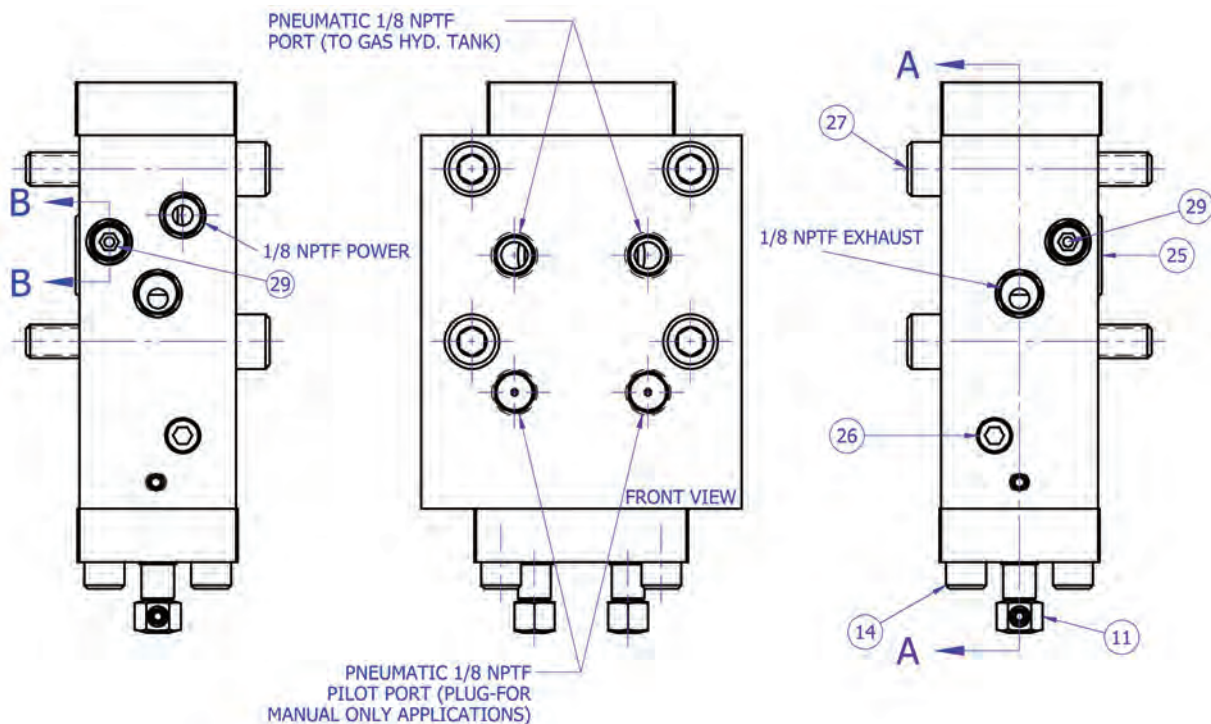


FIGURE 4A

# BILL OF MATERIAL

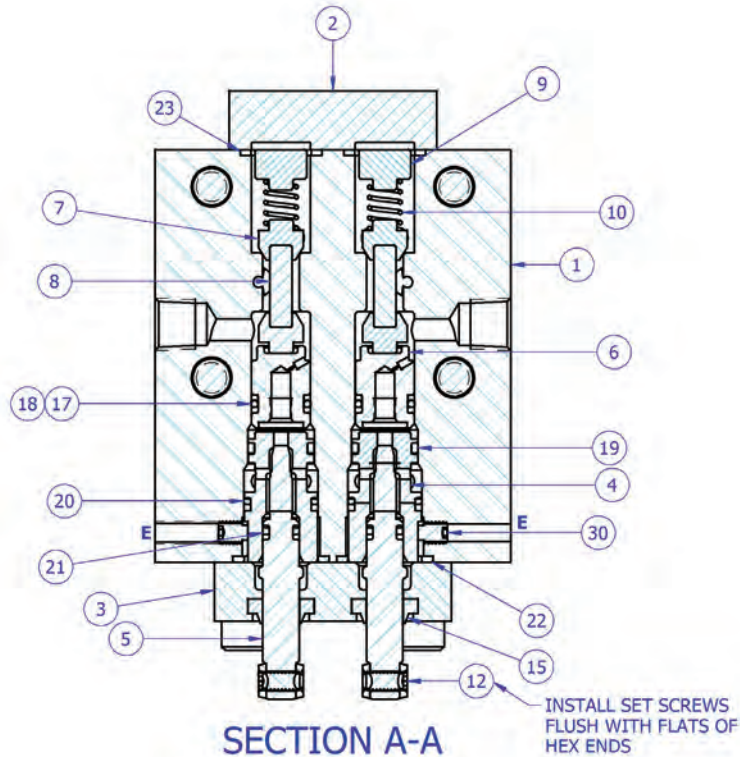


FIGURE 4B

ITM	QTY.	DESCRIPTON	ITM	QTY	
1	1	1/8" POPPET BLOCK BODY	17	2	O-RING – PISTON
2	1	1/8" POPPET BLOCK END CAP	18	2	BACK-UP RING - PISTON
3	1	1/8" P. BLK. EXHAUST POPPET CAP	19	2	O-RING – SEAT INSERT
4	2	1/8" POPPET BLOCK SEAT INSERT	20	2	O-RING – SEAT INSERT
5	2	1/8" POPPET BLK NEEDLE SCREW	21	2	O-RING – NEEDLE SCREW
6	2	1/8" POPPET BLOCK PILOT PISTON	22	2	O-RING – BOTTOM CAP
7	4	1/8" POPPET BLOCK POPPET	23	2	O-RING – TOP CAP
8	2	1/8" POPPET PIN			
9	2	1/8" POPPET BLK SPRING SPACER	25	2	O-RING – MANIFOLD
10	2	SPRING	26	2	FLUSH PLUG LEVEL SEAL
11	2	1/8" POPPET BLOCK HEX END	27	4	SOCKET HEAD CAP SCREW MTG.
12	2	SOCKET HEAD SET SCREW FLAT PT			
13	4	SOCKET HEAD CAP SCREW - TOP	29	2	ORFICE PLUG
14	4	SOCKET HEAD CAP SCREW – BTM.	30	2	SOCKET SET SCREW HFDOG
15	2	SLOTTED HEAL WIPER	31	1	O-RING - UPPER CAP

## 1/8" Poppet Block Control

# DISASSEMBLY & ASSEMBLY PROCEDURE

## DISASSEMBLY

**WARNING:** Isolate and disarm control. Turn off power gas, bleed off gas volume in power storage tank if so equipped, open and close both Needle Screws Item (5) to vent any entrapped pressure.

**NOTE:** Before continuing assure the availability of spare o-rings and poppets.

1. Remove four M8 x 50 mm Socket Head Cap Screws Item (27) releasing the Poppet Block Assembly from the actuator.

**NOTE:** Take caution with the two manifold O-rings Item (25) located between the Poppet Block and actuator.

2. Remove two 10-32 x 1/4" Socket Head Set Screws Item (30) from Poppet Block Body Item (1). Access to these Set Screws is located on the sides of the body, Illustrated in Figure 5.

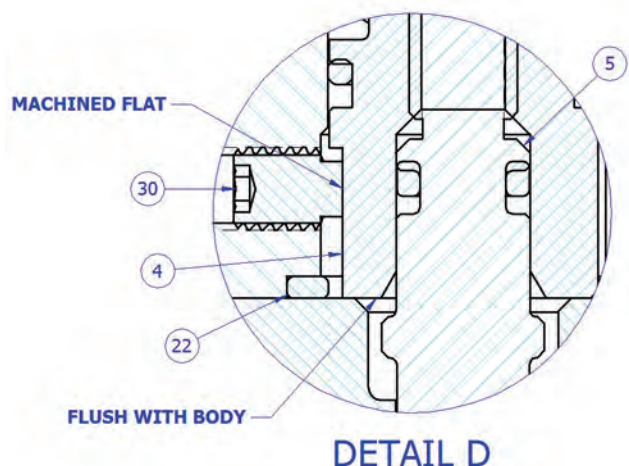
**NOTE:** These two set screws are located deep inside the body Item (1) and require a long Allen Wrench to remove and reinstall.

3. Remove four 10-32 x 1/4" Socket Head Set Screws Item (30) located on the top of the Poppet Block Assembly.
4. Remove one end Cap Item (2) and O-rings Item (23).
5. Remove two Spring Spacers Item (9), Spring Item (10), Two Poppets Item (7) & two Poppet Pins Item (8).
6. Remove two 8-32 x 3/8" Socket Head Set Screws Item (12) from the two Hex Ends Item (11) located on the bottom of the assembly and remove the two Hex Ends from the Needle Screws Item (5).

7. Remove four 1/4"-20 x 1" Socket Head cap Screws Item (14), one end Cap Item (3) and two O-Rings Item (22).

**NOTE:** When removing the End Cap Screws Item (3), the two Needle Screws Item (5) and two Seat Inserts Item (4) can all be removed as an assembly.

8. Unthread two Needle Screws Item (5) from Seat Insert Item (4).
9. Remove two Pilot Pistons Item (6) and two Poppets Item (7). Each Pilot Piston has a 10-31 tapped hole in the bottom and can be removed from the Body with one of the 10-31 x 5/8 Socket Head Cap Screws Item (13).



**FIGURE 5**

**NOTE:** Do not remove Pipe Plugs Items (29) and (26) located on both sides of Body Item (1). See Figure 6.

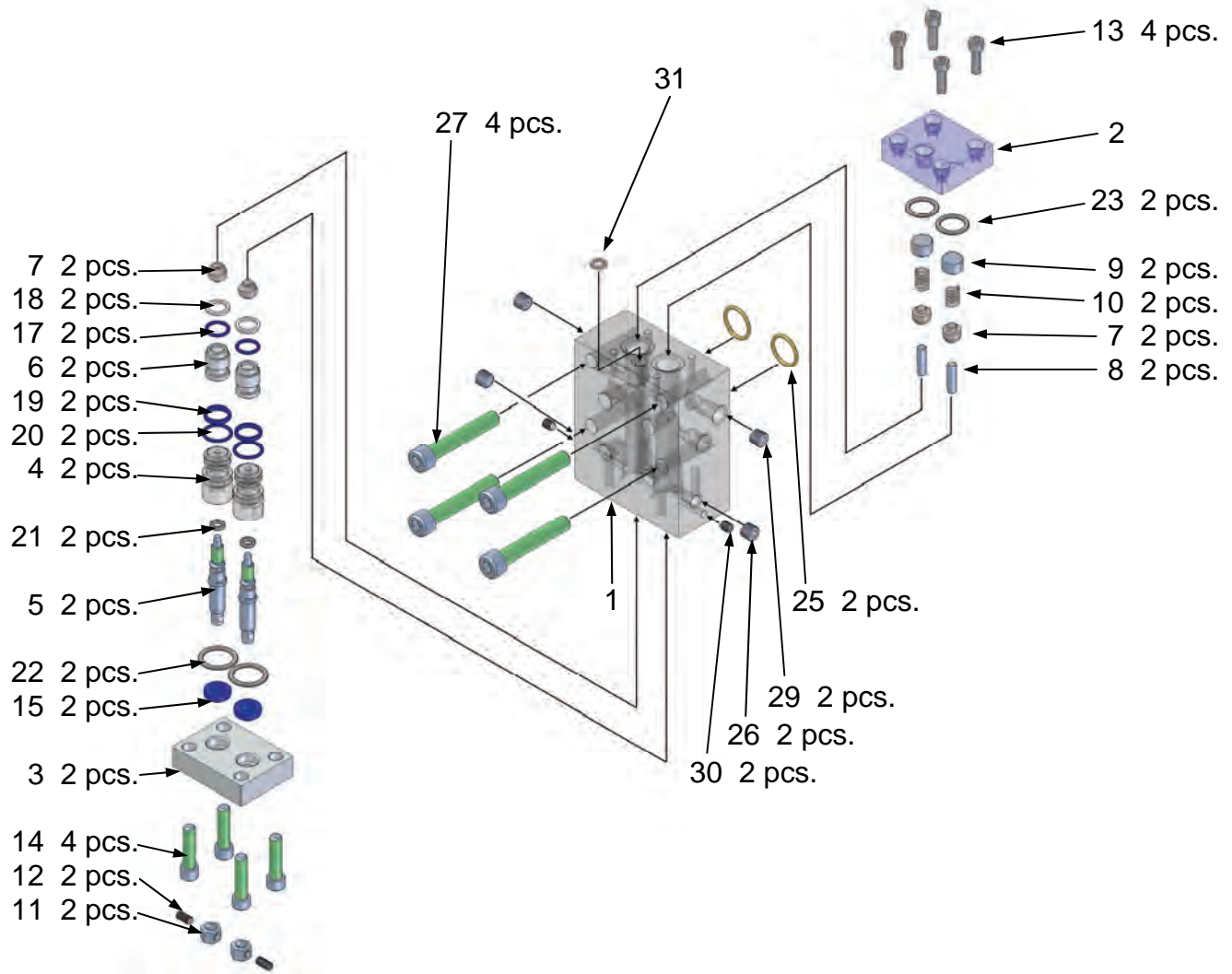


FIGURE 6

**ASSEMBLY**

1. Replace all O-rings, Back-up Rings, Wipers, Poppets and Springs listed in the Seal Kit Table Figure 7.
2. During Reassembly refer Figure 5 to ensure two Needle Screws Item (5) and two Seat Inserts Item (4) are located inside the Body Item (1) correctly. It is extremely important not to install the two Seat Inserts Item (4) too deep inside the Body. The Seat Inserts must be flush with the Body surface Item (1). Install both Needle Screws Item (5) and rotate the Seat Inserts Item (4) until the flats are outward towards the sides of the Body as illustrated in Figure 5.

**NOTE:** To prevent installation error, once both Seat Inserts and Needle Screws are installed inside the Body, install the End Cap Item (3) and tighten the Socket Head Cap Screws Item (14). Now pull on both Needle Screws to position the Seat Inserts before installing the Socket Head Set Screws Item (30).

3. During re-installation take caution that both sets of Poppets, top and bottom, are engaged correctly onto the two Poppet Pins Item (8).
4. It is recommended that small amounts of petroleum based grease or hydraulic fluid be used to assist in the reassembly process and ensure O-ring seals are not damaged.

# 1/8" Poppet Block Control

5. When installing the End Cap fasteners, Items (13 and (14) use a fastener lubrication grease such as Never-Seez<sup>®</sup> and do not overtorque Socket Head Cap Screws Items (13) and (14).
  - *Maximum torque for 10-32 x 5/8" Socket Head Cap Screws Item (13) is 13 in-lbs.*
  - *Maximum torque for 1/4-20 x 1" Socket Head Cap Screws is 25 in-lbs.*
6. Take caution not to pinch or damage the two manifold O-rings Item (25) while mounting the completed poppet control assembly on the actuator footprint. Install and tighten the four M8 x 50mm Socket Head Cap screws Item (27) to 52 in-lbs. max.

SEAL KIT		
Item #	Quantity	Description
23	2	O-ring
10	2	Spring
7	4	Poppets
31	1	O-ring
25	2	O-ring
17	2	O-ring
18	2	Back-up Ring
19	2	O-ring
20	2	O-ring
21	2	O-ring
22	2	O-ring
15	2	Wiper

**FIGURE 7**



**Notes:**

**North & South America**

18703 GH Circle  
 PO Box 508  
 Waller, Texas 77484  
 USA  
 T +1 281 727 5300  
 F +1 281 727 5353

2500 Park Avenue West  
 Mansfield, Ohio 44906  
 USA  
 T +1 419 529 4311  
 F +1 419 529 3688

9009 King Palm Drive  
 Tampa, Florida 33619  
 USA  
 T +1 813 630 2255  
 F +1 813 630 9449

4112-91A Street  
 Edmonton, Alberta T6E5V2  
 Canada  
 T +1 780 450 3600  
 F +1 789 450 1400

AV. Hollingsworth, 325  
 Iporanga  
 Sorocaba, SP 18087-105  
 Brazil  
 T +55 15 3238 3788  
 F +55 15 3228 3300

**Europe**

Asveldweg 11  
 7556 BT Hengelo (O)  
 The Netherlands  
 T +31 74 256 1010  
 F +31 74 291 0938

Siemensring 112  
 D47877 Willich  
 Germany  
 T +49 2154 499 660  
 F +49 2154 499 6313

30/36 Allee du Plateau  
 93250 Villemomble  
 France  
 T +331 48 122610  
 F +331 48 122619

6 Bracken Hill  
 South West Industrial Estate  
 Peterlee, Co Durham  
 SR82LS, United Kingdom  
 T +44 191 518 0020  
 F +44 191 518 0032

3 Furze Court  
 114 Wickham, Hampshire  
 Fareham, Hampshire  
 PO167SH, United Kingdom  
 T +44 132 984 8900  
 F +44 132 984 8901

**Middle East & Africa**

2 Monteer Road, Isando  
 Kempton Park, 1600  
 South Africa  
 T +27 11 974 3336  
 F +27 11 974 7005

PO Box 17033  
 Jebel Ali Free Zone  
 Dubai,  
 United Arab Emirates  
 T +971 4883 5235  
 F +971 4883 5312

**Asia Pacific**

19, Kian Teck Crecent,  
 Singapore 628885  
 T +65 6501 4600  
 F +65 6268 0028

9/F Gateway Building  
 No. 10 Ya Bao Road  
 Chaoyang District  
 Beijing, P.R. China  
 T +86 10 5821 1188  
 F +86 10 5821 1100

No 15 Xing Wang Road  
 Wuqing Development Area  
 Tianjin 301700  
 P.R. China  
 T +86 22 8212 3300  
 F +86 22 8212 3308

Lot 13112, Mukim Labu,  
 Kawasan Perindustrian Nilai  
 71807 Nilai, Negeri Sembilan  
 Malaysia  
 T +60 6 799 2323  
 F +60 6 799 9942

471 Mountain Highway  
 Bayswater, Victoria 3153  
 Australia  
 T +61 3 9721 0200  
 F +61 3 9720 0588

Delphi B-Wing, 601-602, 6<sup>th</sup>  
 Floor, Central Avenue,  
 Hiranandani Business Park,  
 Powai Mumbai-400093,  
 Maharashtra India  
 T +91 22 6694 2711  
 F +91 22 2825 3394

NOF Shinagawa Konan Building  
 1-2-5, Higashi-shinagawa  
 Shinagawa-Ku, Tokyo  
 140-0002 Japan  
 T +81 3 5769 6873  
 F +81 3 5769 6902

Please visit our website for up to date product data. [www.shafervalve.com](http://www.shafervalve.com)

All Rights Reserved

We reserve the right to modify or improve the designs or specifications of the products mentioned in this manual at any time without notice. Emerson Process Management does not assume responsibility for the selection, use or maintenance of any product. Responsibility for proper selection, use and maintenance of any Emerson Process Management product remains solely with the purchaser.

©2007 Emerson Electric Co.

**Shafer™**

[www.ShaferValve.com](http://www.ShaferValve.com)



**EMERSON™**  
 Process Management