

X-STREAM *Enhanced* XEXF - Field Housing Gas Analyzer

- Up to five component gas analyzer featuring NDIR/UV/VIS photometer, paramagnetic and electrochemical O₂, thermal conductivity and moisture sensors
- Enhanced performance with IntrinzX technology
- Modern communication capabilities including web-browser accessibility
- Outstanding reliability with a three-year warranty

Features

The X-STREAM *Enhanced* field housing analyzer provides powerful analytical technology in a wall-mountable NEMA 4X/IP66 stainless steel housing. Special solutions for Zone 2 and Div. 2 hazardous areas are available with CSA-C/US approvals. The dual-compartment version with separated physics and electronics enables complete gas-tight separation.

Analytical Flexibility

The X-STREAM platform enables the combination of up to five channels of non-dispersive infrared, ultraviolet, visible photometers (NDIR/UV/VIS), thermal conductivity (TCD), trace moisture (tH₂O), paramagnetic, electrochemical and trace oxygen (pO₂/eO₂/tO₂) detectors.

Enhanced Performance

With the X-STREAM photometer technology, the analyzer provides a measuring accuracy that allows improving your process while also reducing the total cost of ownership by:

- Large dynamic ranges
- Very low temperature dependency
- Outstanding long-term stability
- Simplified calibration

Three-Year Warranty

All important parts and the complete analyzer are run through a variety of test procedures, including long-term stability and temperature behavior. This enables us to provide a three-year warranty for the analyzer, excluding sample-wetted parts and externally connected electronics.



X-STREAM *Enhanced* XEXF - Field Housing Gas Analyzers

Modern Communication

The X-STREAM *Enhanced* offers a unique web-browser interface that features:

- World wide access through the internet without installation of additional software
- E-mail notification on alarms and events or with daily report
- Complete remote configuration

X-STREAM *Enhanced* analyzers provide four status signal relay outputs (according to NAMUR NE 107), MODBUS TCP protocol over Ethernet and as option RTU over serial (RS232/485) communication. Onboard SD card and USB ports enable storage of:

- Data, calibration and event logger files
- Analyzer configuration file

A pre-engineered DeltaV module features easy integration into your DeltaV environment via ModbusRTU over serial interface.

Tools

The X-STREAM *Enhanced* analyzer software provides several tools that make complex process systems easier and avoid additional expenses for third-party equipment:

- Programmable Logic Controller (PLC) for control of sample handling and sample lines
- Calculator for virtual measurements
- Analog inputs for integrating external measurements into the powerful X-STREAM *Enhanced* environment

Ease of Use

The instrument has an graphic display and is operated manually by six keys. Clear text messages (available in several languages) and industry-standard symbols provide information about the measurement and the analyzer status.

Options in a Field Housing Enclosure

- Sample gas pump
- Flow measurement with alarm
- Valve block
- Pressure sensor
- Digital Input/Output cards
- Analog input card

Worldwide Approvals

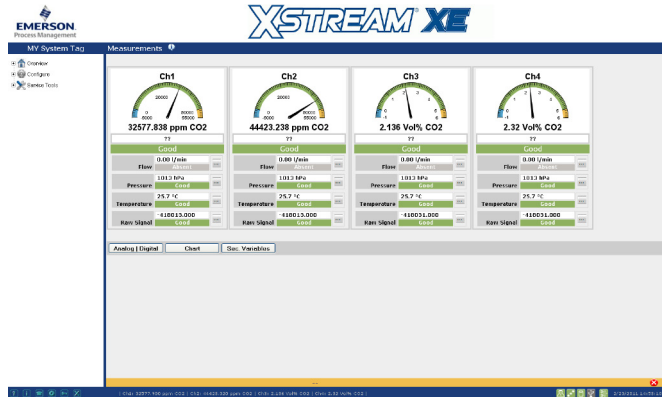
CSA-C/US, IEC and CE approvals allow global installation of X-STREAM field housing analyzers. Furthermore CSA-C/US approvals for Zone 2 and Division 2 allow installation in hazardous areas.

Applications

- Refining, petrochemical, chemical process analysis and control
- Hydrogen, ammonia and fertilizer production
- Gas purity and air separation units
- Natural gas production and distribution
- Metallurgical manufacturing, hardening and heat treatment processes
- Biogas and landfill



Interior view, showing two NDIR benches in an unheated upper compartment, a heated box option in the lower compartment, I/O boards.



Web browser showing measured concentrations and secondaries.

Process-approved Sensors

Solvent-resistant, corrosion-resistant and infallible containment solutions are available.

- Hydrogen cooling of gas turbines
- Monitoring fermentation gases in biotechnology
- Quality control of natural gas production and distribution
- Exhaust gas measurements for burner efficiency control
- Flue gas analysis of boilers, power plants and incinerators
- Internal combustion engine emissions



The enlarged graphic display of the X-STREAM Enhanced provides measurement and status information with plain text and symbols.

The user interface remains operable with door open (see left image).

Specifications

Lowest and Highest Ranges Available for Different Gases (Excerpt)

In total, the X-STREAM family of process gas analyzers can detect more than 60 gases. The following table is an example of the most commonly used gases. Contact your Emerson representative for information on configurations or gases that are not listed.

Table 1 - Gas Components and Measuring Ranges, Examples

Gas component		Principle	Special Specs or Conditions	Standard Specs (Table 2 – 4)	Enhanced Specs (Table 2 & 4)	
			Lowest Range	Lowest Range	Lowest Range	Highest Range
Acetone ¹	CH ₃ COCH ₃	UV		0–400 ppm	0–800 ppm	0–3 %
Acetone ¹	CH ₃ COCH ₃	IR		0–500 ppm	0–1000 ppm	0–3 %
Acetylene	C ₂ H ₂	IR		0–3 %	0–6 %	0–100 %
Ammonia	NH ₃	IR		0–100 ppm	0–200 ppm	0–100 %
Argon	Ar	TCD		0–50 %	0–100 %	0–100 %
Carbon dioxide	CO ₂	IR	0–5 ppm ⁵	0–50 ppm	0–100 ppm	0–100 %
Carbon monoxide	CO	IR	0–10 ppm ⁵	0–50 ppm	0–100 ppm	0–100 %
Chlorine	Cl ₂	UV		0–300 ppm	0–600 ppm	0–100 %
Ethane	C ₂ H ₆	IR		0–1000 ppm	0–2000 ppm	0–100 %
Ethanol ¹	C ₂ H ₅ OH	IR		0–1000 ppm	0–2000 ppm	0–10 %
Ethylene	C ₂ H ₄	IR		0–400 ppm	0–800 ppm	0–100 %
Helium	He	TCD		0–10 %	0–20 %	0–100 %
Hexane ¹	C ₆ H ₁₄	IR		0–100 ppm	0–200 ppm	0–10 %
Hydrogen ⁴	H ₂	TCD		0–1 %	0–2 %	0–100 %
Hydrogen Sulfide	H ₂ S	UV		0–2 %	0–4 %	0–10 %
Hydrogen Sulfide	H ₂ S	IR		0–10 %	0–20 %	0–100 %
Methane	CH ₄	IR		0–100 ppm	0–200 ppm	0–100 %
Methanol ¹	CH ₃ OH	IR		0–1000 ppm	0–2000 ppm	0–10 %
n-Butane	C ₄ H ₁₀	IR		0–800 ppm	0–1600 ppm	0–100 %
Nitrogen dioxide ¹	NO ₂	UV	0–25 ppm ³	0–100 ppm	0–200 ppm	0–10 %
Nitrogen monoxide	NO	IR	0–100 ppm ³	0–250 ppm	0–500 ppm	0–100 %
Nitrous oxide	N ₂ O	IR		0–100 ppm	0–200 ppm	0–100 %
Oxygen	O ₂	Electrochem.		0–5 %	–	0–25 % ^{2,6}
Oxygen	O ₂	Paramagn.		0–1 %	0–2 %	0–100 %
Oxygen, Trace	O ₂	Electrochem.		0–10 ppm	–	0–10 000 ppm ⁶
Propane	C ₃ H ₈	IR		0–1000 ppm	0–2000 ppm	0–100 %
Propylene	C ₃ H ₆	IR		0–400 ppm	0–800 ppm	0–100 %
Sulfur dioxide	SO ₂	UV	0–25 ppm ³	0–130 ppm	0–200 ppm	0–1 %
Sulfur dioxide	SO ₂	IR		0–1 %	0–2 %	0–100 %
Sulfur hexafluoride	SF ₆	IR	0–5 ppm ³	0–20 ppm	0–50 ppm	0–2 %
Toluene ¹	C ₇ H ₈	UV		0–300 ppm	0–600 ppm	0–5 %
Vinyl chloride	C ₂ H ₃ Cl	IR		0–1000 ppm	0–2000 ppm	0–2 %
Water vapor ¹	H ₂ O	IR		0–1000 ppm	0–2000 ppm	0–8 %
Water vapor, Trace ¹	H ₂ O	Capacitive		0–100 ppm	–	0–3000 ppm ⁶

¹ Dew point below ambient temperature

² Higher concentrations decrease sensor lifetime

³ Daily zero calibration: Required for ranges below lowest standard specs range

⁴ Special "refinery" application with 0–1 % H₂ in N₂ available

⁵ see Table 5

⁶ Standard specs only

Standard and Enhanced Performance Specifications

Table 2 - IR/UV/VIS. TCD - Standard and Enhanced Measurement Performance Specifications

	NDIR/UV/VIS		Thermal Conductivity (TCD)	
	Standard Spec	Enhanced Spec	Standard Spec	Enhanced Spec
Detection limit (4σ) ^{1 4}	≤ 1 %	≤ 0.5 %	≤ 1 %	≤ 0.5 %
Linearity ^{1 4}	≤ 1 %		≤ 1 %	
Zero-point drift ^{1 4}	≤ 2 % per week	≤ 1 % per week	≤ 2 % per week	≤ 1 % per week
Span (sensitivity) drift ^{1 4}	≤ 0.5 % per week	≤ 1 % per month	≤ 1 % per week	
Repeatability ^{1 4}	≤ 0.5 %		≤ 0.5 %	
Response time (t ₉₀) ³	4 s ≤ t ₉₀ ≤ 7 s ⁵		15 s ≤ t ₉₀ ≤ 30 s ⁶	
Permissible gas flow	0.2–1.5 l/min.		0.2–1.5 l/min. ¹¹	
Influence of gas flow ^{1 4}	≤ 0.5 %		≤ 1 % ¹¹	
Maximum gas pressure ⁸	≤ 1500 hPa abs. (≤ 7 psig)		≤ 1500 hPa abs. (≤ 7 psig)	
Influence of pressure ²				
– At constant temperature	≤ 0.10 % per hPa		≤ 0.10 % per hPa	
– With pressure compensation ⁷	≤ 0.01 % per hPa		≤ 0.01 % per hPa	
Permissible ambient temperature ⁹	0 (-20) to +50 °C (32 (-4) to 122 °F)		0 (-20) to +50 °C (32 (-4) to 122 °F)	
Influence of temperature ^{1 13} (at constant pressure)				
– On zero point	≤ 1 % per 10 K ≤ 0.5 % per 10 K		≤ 1 % per 10 K ≤ 0.5 % per 10 K	
– On span (sensitivity)	≤ 5 % (0 to +50 °C / 32 to 122 °F)		≤ 1 % per 10 K	
Thermostat control ^{6 12}	none / 60 °C (140 °F) ⁵		none / 60 °C (140 °F) ¹⁰	
Warm-up time ⁶	15 to 50 minutes ⁵		approx. 50 minutes	

¹ Related to full scale

² Related to measuring value

³ From gas analyzer inlet at gas flow of 1.0 l/min (electronic damping = 0 s)

⁴ Constant pressure and temperature

⁵ Dependent on integrated photometer bench

⁶ Depending on measuring range

⁷ Pressure sensor is required

⁸ Limited to atmospheric if internal sample pump

⁹ Temperatures below 0 °C (-4 °F) with thermostat control only

¹⁰ Thermost. controlled sensor: 75 °C (167 °F)

¹¹ Flow variation within ± 0.1 l/min

¹² Optional thermostat controlled box with temperature 60 °C (140 °F)

¹³ Temperature variation: ≤ 10 K per hour

Table 3 - Oxygen – Standard and Enhanced Measurement Performance Specifications

	Oxygen Sensors			
	Paramagnetic (pO ₂)		Electrochemical (eO ₂)	Trace (tO ₂)
	Standard Spec	Enhanced Spec		
Detection limit (4σ) ^{1 4}	≤ 1 %	≤ 0.5 %	≤ 1 %	≤ 1 %
Linearity ^{1 4}	≤ 1 %		≤ 1 %	≤ 1 %
Zero-point drift ^{1 4}	≤ 2 % per week	≤ 1 % per week	≤ 2 % per week	≤ 1 % per week
Span (sensitivity) drift ^{1 4}	≤ 1 % per week	≤ 0.5 % per week	≤ 1 % per week	≤ 1 % per week
Repeatability ^{1 4}	≤ 0.5 %		≤ 1 %	≤ 1 %
Response time (t ₉₀) ³	< 5 s		approx. 12 s	20 to 80 s
Permissible gas flow	0.2–1.5 l/min		0.2–1.5 l/min.	0.2–1.5 l/min.
Influence of gas flow ^{1 4}	≤ 2 % ¹⁰		≤ 2 %	≤ 2 %
Maximum gas pressure ⁷	≤ 1500 hPa abs. (≤ 7 psig) ¹³		≤ 1500 hPa abs. (≤ 7 psig)	≤ 1500 hPa abs. (≤ 7 psig)
Influence of pressure ²				
– At constant temperature	≤ 0.10 % per hPa		≤ 0.10 % per hPa	≤ 0.10 % per hPa
– With pressure compensation ⁶	≤ 0.01 % per hPa		≤ 0.01 % per hPa	≤ 0.01 % per hPa
Permissible ambient temperature ⁸	0(-20) to +50 °C (32 (4) to 122 °F)		5 to +45 °C (41 to 113 °F)	5 to +45 °C (41 to 113 °F)
Influence of temperature ^{1 12} (at constant pressure)				
– On zero point	≤ 1 % per 10 K ≤ 0.5 % per 10 K		≤ 1 % per 10 K	≤ 1 % per 10 K ⁵
– On span (sensitivity)	≤ 1 % per 10 K		≤ 1 % per 10 K	≤ 1 % per 10 K ⁵
Thermostat control	60 °C (140 °F) ¹¹		none	none ⁹
Warm-up time	Approx. 50 minutes		-	Approx. 50 minutes

¹ Related to full scale

² Related to measuring value

³ From gas analyzer inlet at gas flow of 1.0 l/min (electronic damping = 0 s)

⁴ Constant pressure and temperature

⁵ Range 0–10...200 ppm: ≤ 5 % (5 to 45 °C / 41 to 113 °F)

⁶ Pressure sensor is required

⁷ Limited to atmospheric if internal sample pump

⁸ Temperatures below 0 °C (-4 °F) with thermostat control only

⁹ Thermost. controlled sensor: 35 °C (95 °F)

¹⁰ For ranges 0–5...100 % and flow 0.5...1.5 l/min

¹¹ Optional thermostat controlled sensor with temperature 60 °C (140 °F)

¹² Temperature variation: ≤ 10 K per hour

¹³ No sudden pressure surge allowed

Note! 1 psi = 68.95 hPa

Table 4 - Trace Moisture – Standard Measurement Performance Specifications

	Trace Moisture (tH ₂ O)
Measurement range	-100 to -10 °C dew point (0–100...3000 ppm)
Measurement accuracy	±2 °C dew point
Repeatability	0.5 °C dew point
Response time (t ₉₅)	5 min (dry to wet)
Operating humidity	0 to 100 % r.h.
Sensor operating temperature	-40 to +60 °C
Temperature coefficient	Temperature compensated across operating temperature range
Operating pressure	Depending on sequential measurement system, see analyzer specification ¹ max. 1500 hPa abs / 7 psig
Flow rate	Depending on sequential measurement system, see analyzer specification ¹ 0.2 to 1.5 l/min

¹ If installed in series to another measurement system, e. g. IR channel

Note! 1 psi = 68.95 hPa

Note 1!

Not all data listed are applicable to all analyzer versions (e.g. 60 °C thermostat controlled box is not available for electrochemical and trace oxygen).

Note 2!

For NDIR/UV/VIS measurements, take into account that sample gas may diffuse or be released by leakages into the analyzer enclosure. If existent in the analyzer surroundings, the component to be measured may enter the enclosure. Concentrations then may increase inside the enclosure. High concentrations of the component to be measured inside the enclosure may influence the measurement by unintended absorption, which could cause drift of the measurement. A remedy for this issue is to purge the housing with gas not containing the component of interest.

Note 3!

Measurement principles or composition of sample gas may limit the available options for a specific analyzer configuration concerning e. g. sample handling options or tubing materials.

Special Performance Specifications for Gas Purity Measurements (ULCO & ULCO₂)

Table 5 - Special Performance Specifications for Gas Purity Measurements

	0–10...< 50 ppm CO 0–5...< 50 ppm CO ₂
Detection limit (4 σ) ^{1 2}	< 2 %
Linearity ^{1 2}	< 1 %
Zero-point drift ^{1 2 3}	< 2 % resp. < 0.2 ppm ⁹
Span (sensitivity) drift ^{1 2 4}	< 2 % resp. < 0.2 ppm ⁹
Repeatability ^{1 2}	< 2 % resp. < 0.2 ppm ⁹
Response time (t ₉₀) ⁷	< 10 s
Permissible gas flow	0.2–1.5 l/min.
Influence of gas flow ^{1 2}	< 2 %
Maximum gas pressure ¹⁰	≤ 1500 hPa abs. (≤ 7 psig)
Influence of pressure ⁵	
– At constant temperature	≤ 0.1 % per hPa
– With pressure compensation ⁸	≤ 0.01 % per hPa
Permissible ambient temperature	+15 to +35 °C (59 to 95 °F) +5 to +40 °C (41 to 104 °F)
Influence of temperature ⁶ (at constant pressure)	
– On zero point	< 2 % per 10 K resp. < 0.2 ppm per 10 K ⁹
– On span (sensitivity)	< 2 % per 10 K resp. < 0.2 ppm per 10 K ⁹
Thermostat control	none 60 °C (140 °F)

Note! 1 psi = 68.95 hPa

¹ Related to full scale

² Constant pressure and temperature

³ Within 24 h; daily zero calibration requested

⁴ Within 24 h; daily span calibration recommended

⁵ Related to measuring value

⁶ Temperature variation: ≤ 10 K per hour





⁷ From gas analyzer inlet at gas flow of 1.0 l/min

⁸ Barometric pressure sensor is required

⁹ Whichever value is higher

¹⁰ Limited to atmospheric if internal sample pump

General Specifications

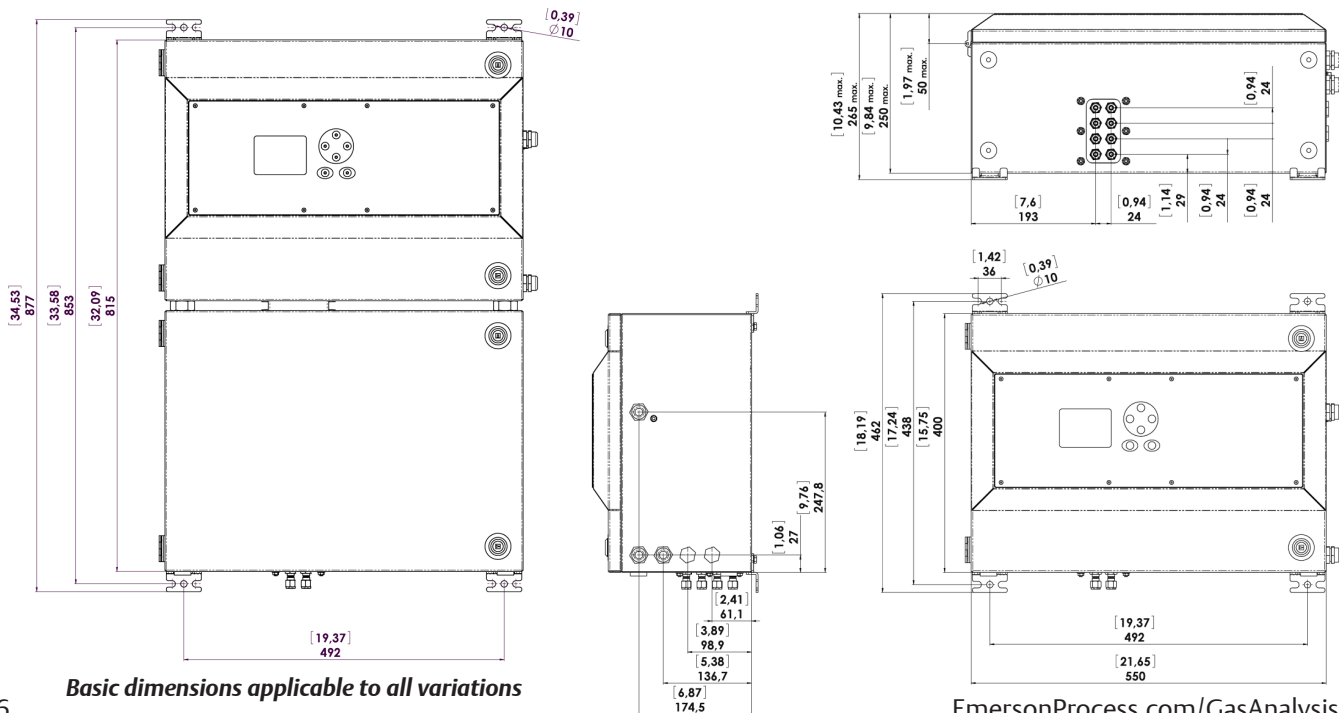
Compliances	CE  DIN EN 61010-1 DIN EN 61326-1	CSA-C/US  C22.2 No 61010-1 UL Std No. 61010-1	CSA-C/US (option N3)  Class I, Div. 2 Grp. ABCD T4 Class I, Zone 2 AEx nAC IIC T4 Ex nAC IIC T4	G-TICK  N96	NAMUR
Gas Connections	Stainless steel: 6/4 mm or 1/4";				
Rated voltage	100–240 V~, 50/60 Hz				
Rated input current	3–1.5 A (5.5–3 A for dual compartment)				
Power input	Internal screw terminals				
Signal Connections	Screw terminals; RJ45, USB				
Enclosure Protection	Type 4X, IP 66 acc. EN 60529 for outdoor installation, protected against direct sunlight				
Humidity (non-condensing)	< 90 % r.h. @ 20 °C (68 °F) < 70 % r.h. @ 40 °C (104 °F)				
Weight	Up to 25 kg (55.1 lbs) (up to 45 kg (99.2 lbs) for dual compartment) depending on configuration				
Options	Integrated flow measurement(s) with alarm(s), barometric pressure sensor, thermostatically controlled box for physical components (60 °C / 140 °F), case purge, sampling pump(s) and/or solenoid valve block(s) for autocalibration				

Signal In- & Outputs, Interfaces

Analog signal outputs:	1–5, individually optically isolated, 4(0)–20 mA ($R_b \leq 500 \Omega$)
Relay outputs:	4 status relays acc. NAMUR NE 107 or e.g. concentration thresholds, valve status notification dry contacts: 1 A, 30 V
Communication interface:	Ethernet with Modbus TCP 2 USB ports optional: RS 485 / 232C with Modbus RTU
Digital I/O (optional):	7/14 digital inputs (for remote control); max. 30 VDC, 2.3 mA, common ground 9/18 additional relay outputs (e.g. concentration thresholds, valve status notification, flow alarm, range ID); dry contacts: 1 A, 30 V
Analog signal inputs (optional):	2 analog inputs: 0–1(10) V ($R_{in} = 100 \text{ k}\Omega$) or 4(0)–20 mA ($R_{in} = 50 \Omega$)

Dimensions

All dimensions in mm [inches in brackets]

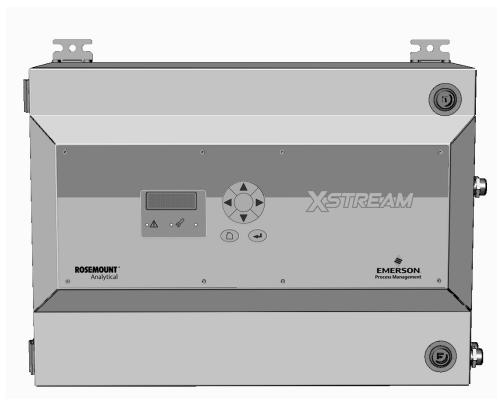


Basic dimensions applicable to all variations

Non-Incendive Version for Hazardous Areas (EX Zone 2 and Division 2)

Zone 2 / Division 2 classification is characterized by the fact that explosive atmosphere is not likely to exist under normal operating conditions. For equipment to be installed in Zone 2 / Division 2, it is sufficient to ensure that the equipment is not a source of ignition under **normal operating** conditions. Equipment with higher protection levels (e. g. with concepts for Zone 1 / Division 1) are permitted to be installed in such areas as well, but are more cost-intensive. An example for such an equipment is a flameproof enclosure (Ex d), also available within the X-STREAM enhanced gas analyzer series.

Protection method of X-STREAM field housing for Zone 2 / Division 2 installations is non-incendive (Ex n). These models are third-party agency approved to carry CSA-C/US markings, based on North American CSA and UL standards.



The non-incendive design (Ex nAC IIC T4) enables installation without the need for purge gas supply, saving infrastructure costs, as well as follow-up costs for purge gas. Compared to a flameproof enclosure, the painted stainless steel housing is much easier to install and does not require an as stable foundation, also saving costs.

The enclosure provides IP66 / Type 4X protection against dust and heavy seas, making it the first choice for outdoor installations.

Flammable gases cannot be measured with a standard non-incendive analyzer, because internal leakage could lead to a potentially explosive atmosphere within the analyzer. Due to its high IP / Type rating, this mixture could not dilute or disappear, turning the internal volume into a Zone 1 or Zone 0 and such voiding the analyzer Zone 2 certification.



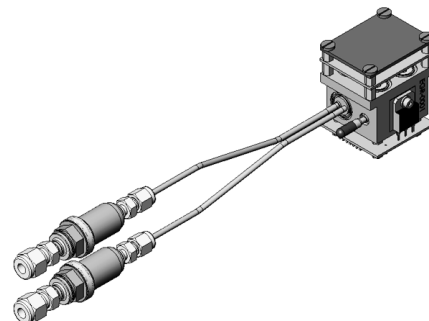
Class I, Div. 2,
Grp. ABCD T4
Class I, Zone 2,
AEx nAC IIC T4
Ex nAC IIC T4

Infallible Containment


An infallible thermal conductivity detector (TCD) containment, designed to meet the requirements of the pressurization standard EN IEC 60079-2, protects against intentional leakage into the analyzer housing. This enables to treat the flammable gas as non-flammable, resulting in a simpler protection concept for the analyzer.

A containment system is considered infallible, if it comprises pipes, tubes, or vessels made of metal, ceramic, or glass, which have no moving joints. Joints shall be made by welding, brazing, glass to metal sealing or eutectic methods. Clamping joints are acceptable, too.

Such a containment has successfully been tested by a third-party agency. To ensure the high level of protection, each containment is undergoing documented and traceable routine tests for overpressure and free-of-leakage production.



EmersonProcess.com/GasAnalysis

 YouTube.com/user/RosemountAnalytical

 Analyticexpert.com

 Twitter.com/RAIhome

 Facebook.com/EmersonRosemountAnalytical

AMERICAS

Emerson Process Management
Rosemount Analytical
10241 West Little York, Suite 200
Houston, Texas 77040
USA
Toll Free + 866 422 3683
T + 713 396 8880
F + 713 466 8175
GAS.CSC@Emerson.com

MIDDLE EAST & AFRICA

Emerson Process Management
Emerson FZE
Jebel Ali Free Zone
Dubai, UAE
P.O. Box 17033
T + 971 4 811 8100
F + 971 4 866 5465
GAS.CSC@Emerson.com

EUROPE

Emerson Process Management
GmbH & Co. OHG
Rosemount Analytical
Industriestrasse 1
63594 Hasselroth
Germany
T + 49 6055 884 0
F + 49 6055 884 209
GAS.CSC@Emerson.com

ASIA PACIFIC

Emerson Process Management
Asia Pacific Private Ltd
1 Pandan Crescent
Singapore 0512
Singapore
T + 65 777 8211
F + 65 777 0947
GAS.CSC@Emerson.com

©2015 Emerson Process Management. All rights reserved.

The Emerson logo is a trademark and service mark of Emerson Electric Co. Rosemount Analytical is a mark of one of the Emerson Process Management family of companies. All other marks are the property of their respective owners.

The contents of this publication are presented for information purposes only, and while effort has been made to ensure their accuracy, they are not to be construed as warranties or guarantees, express or implied, regarding the products or services described herein or their use or applicability. All sales are governed by our terms and conditions, which are available on request. We reserve the right to modify or improve the designs or specifications of our products at any time without notice.