

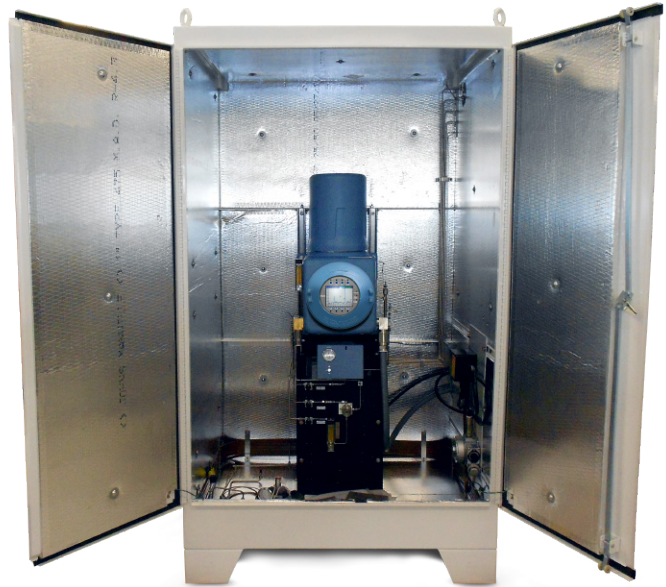
700XA Gas Chromatograph System Cabinet

An enclosed, pre-packaged solution for your GC installations

Rosemount Analytical offers a pre-packaged system for the 700XA gas chromatograph designed to simplify the installation and start-up process of your online gas chromatograph by reducing the complexity down to just four easy steps:

1. **SECURE** the cabinet onto a concrete foundation
2. **WIRE** to the power and signal junction boxes
3. **CONNECT** the carrier, calibration, and sample gases
4. **ANALYZE**

The 700XA gas chromatograph system cabinet is rated for Class I, Division 2 hazardous area applications and ideal for extreme hot or cold climate conditions ranging from -40 to 130 °F (-40 to 55 °C). In addition, the cabinet provides secure, enclosed access to the gas chromatograph and allows the carrier and calibration gas bottles to be locked safely at the rear of the cabinet for easy access.



The 700XA System Cabinet showing the 700XA pre-installed in the insulated and heated cabinet ready for fast and easy on-site hook-up.

Specifications

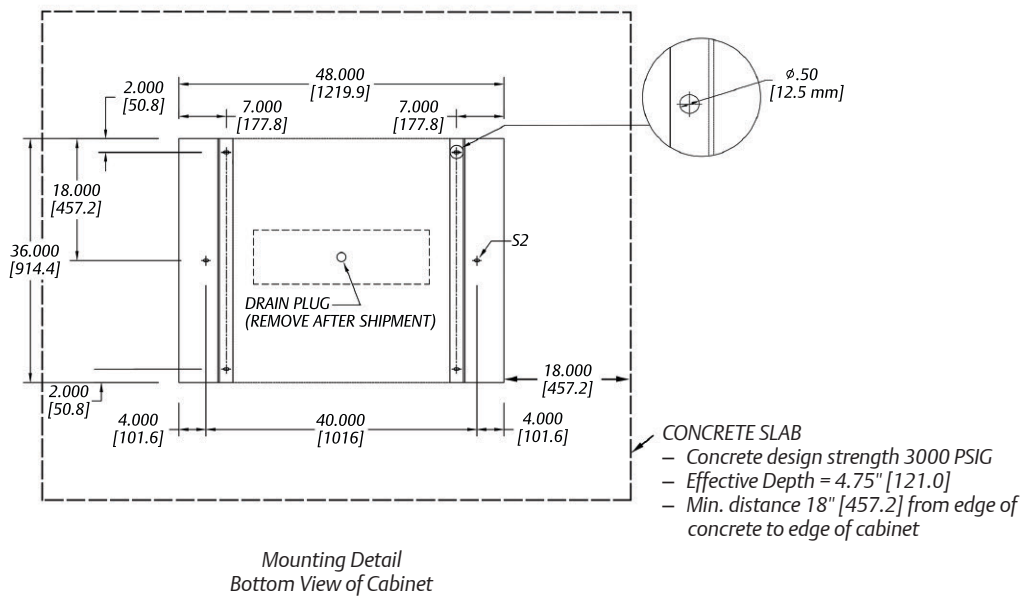
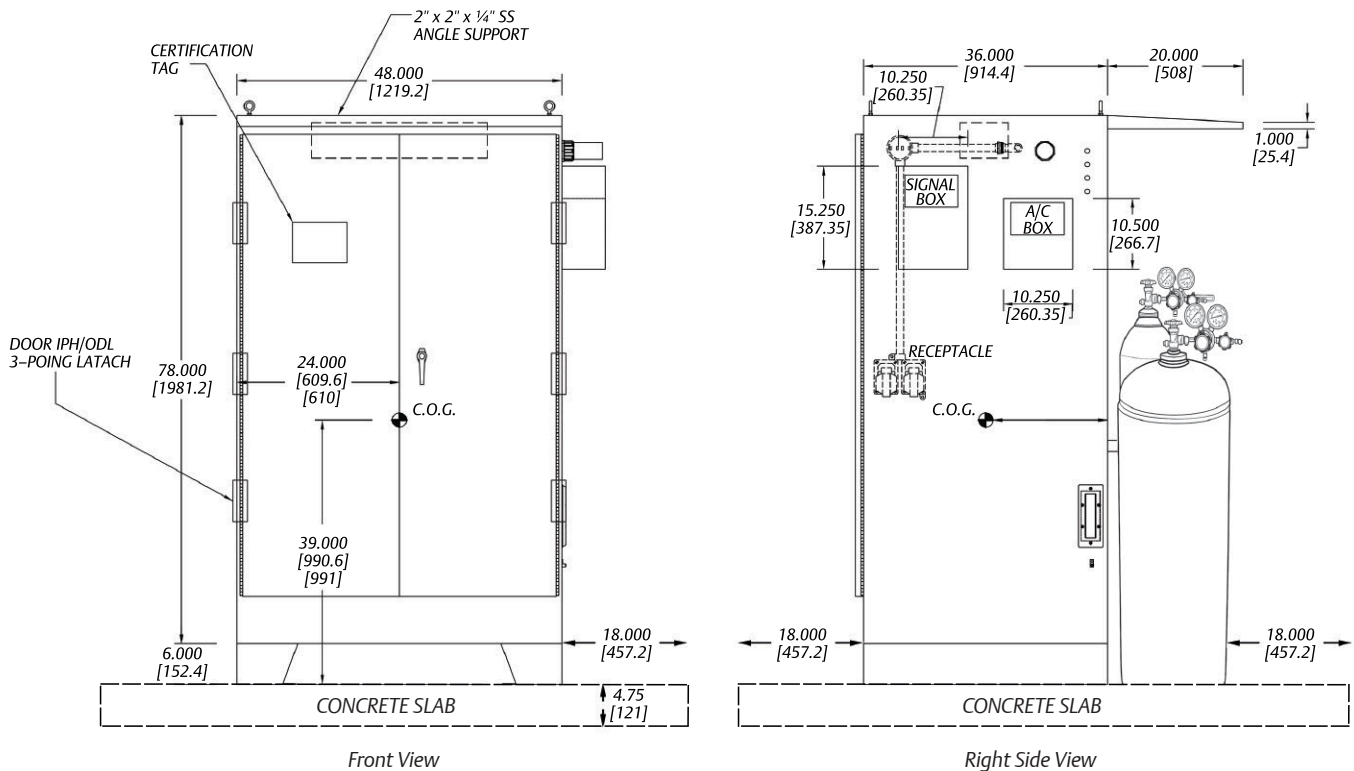
- **Dimensions:** 78" x 48" x 36"
- **Power:** 1600 Watts (incl. GC and heaters)
- **Complete Weight:** Approximately 1,850 lbs/839 kg
 - Cabinet Weight: 600 lbs/272 kg
 - GC Weight: 350 lbs/159 kg
- **Enclosure:** 316L SS #4 Finish NEMA 12/3R Standards
- **Certification:** CE/ATEX Group 2, Category 3G-EX113G
- **Class I, Division 2 Hazardous Rating**
- **IP12 Protection** (rain, snow, sleet)
- **Stream Capacity:** Up to two vapor streams
- **Ambient Temperature Range:** -40 to 130 °F (with winterized option)
- **Wind Load Capacity:** 150 mph. Seismic and wind loads are calculated in accordance with ASCE-05 minimum design loads for buildings and other structures

Typical Applications

- Fiscal Metering
- Custody Transfer
- Power Plants/Turbines
- Gas Quality Analysis
- Process Monitoring
- Trace Contaminate Monitoring
- Landfill and Biogas
- Fuel Gas Control
- Environmental Monitoring
- Gas Processing
 - NGL, GTL, and LNG facilities
- Custom Applications

Recommended Installation

The drawings below represent the minimum recommended installation guidelines for the 700XA GC System Cabinet. Please consult Rosemount Analytical for detailed installation recommendations for your application.



Option Selection

Use the matrix below to choose the options for your application and build up the model string to order.

700XA - - - - - - - -

1 2 3 4 5 6 7 8

Model	Description
	CAB – Heated Cabinet for 700XA Gas Chromatograph

Level 1	Gas Chromatograph	
	7X1	700XA – One Vapor Stream
	7X2	700XA – Two Vapor Streams

Level 2	Cabinet Material	
	RS	Painted Rolled Steel
	S4	Painted 304 Stainless Steel
	S6	Painted 306 Stainless Steel

Level 3	Approvals	
	A	ATEX/IEC-Ex rated components - ATEX Class I, Zone 1, IIB + H2 (example)
	C	CSA rated components - Class I, Division 2, Groups B, C, D
	X	Special

Level 4	Power	
	A1	110V AC
	A2	220V AC

Level 5	Calibration Gas Heat Trace	
	A1	Heat Trace and Bottle Blanket for Size XX Calibration Bottle
	A2	220V AC Heat Trace and Bottle Blanket for Size XX Calibration Bottle
	N	No Calibration Gas Heat Trace or Bottle Blanket

Level 6	Lighting	
	L1	110V AC Class I, Division 2, Internal Light
	L2	220V AC Class I, Division 2, Internal Light
	A1	3/1/20143/1/2014
	A2	220V AC IEC/ATEX Class I, Zone I, Internal Light
	N	None

Level 7	Sample Entry	
	H1	Single Vapor Heat Trace Boot with Internal Condulet for Termination
	H1	Two Vapor Heat Trace Boot with Internal Condulet for Termination
	B	1/8 Bulkhead Fittings
	N	None

Level 8	Sample Vent Connection	
	VA	Sample Vent(s) to Atmospheric Vent
	VF	Sample Vent(s) to 1/4" SS Bulkhead with Check-Valve For Connection to Flare or Process Return
	H1	Sample Vent(s) to One 1/8" Heat-Trace Boot with Internal Condulet for Termination For Connection to Flare or Process Return
	H2	Sample Vent(s) to Two 1/8" SS Heat-Trace Boot with Internal Condulet for Termination For Connection to Flare or Process Return

www.RosemountAnalytical.com



www.analyticexpert.com



www.twitter.com/RAIhome



www.youtube.com/user/RosemountAnalytical



www.facebook.com/EmersonRosemountAnalytical

AMERICAS

Emerson Process Management

Rosemount Analytical
Analytical Center of Excellence
10241 West Little York, Suite 200
Houston, TX 77040 USA
Toll Free 866 422 3683
T +1 713 396 8880 (North America)
T +1 713 396 8759 (Latin America)
F +1 713 466 8175

gc.csc@emerson.com

EUROPE

Emerson Process Management

Bond Street, Dumyat Business Park
Tullibody FK10 2PB UK
T +44 1259 727220
F +44 1259 727727

sales.gcema@emersonprocess.com

MIDDLE EAST AND AFRICA

Emerson Process Management

Emerson FZE
Jebel Ali Free Zone
Dubai, United Arab Emirates, P.O. Box 17033
T +971 4 811 8100
F +971 4 886 5465

gc.csc@emerson.com

ASIA-PACIFIC

Emerson Process Management

Asia Pacific Private Limited
1 Pandan Crescent
Singapore 128461
Republic of Singapore
T +65 6 777 8211
F +65 6 777 0947

analytical@ap.emersonprocess.com

©2014 Emerson Process Management. All rights reserved.

The Emerson logo is a trademark and service mark of Emerson Electric Co. Rosemount Analytical is a mark of one of the Emerson Process Management family of companies. All other marks are the property of their respective owners.

The contents of this publication are presented for information purposes only, and while effort has been made to ensure their accuracy, they are not to be construed as warranties or guarantees, express or implied, regarding the products or services described herein or their use or applicability. All sales are governed by our terms and conditions, which are available on request. We reserve the right to modify or improve the designs or specifications of our products at any time without notice.