

# SMART WIRELESS THUM™ ADAPTER

FISHER® FIELDVUE™ DVC6200, DVC 6000, AND DVC2000 DIGITAL VALVE CONTROLLERS

WirelessHART

## Wirelessly gain access to the benefits and features of your digital valves

Your facility has a significant installed base of HART® communicating FIELDVUE™ instruments. However, not all of these devices are connected to a HART network infrastructure to support valve diagnostics.

The Smart Wireless THUM™ adapter is an easy way to unleash otherwise “stranded” valve diagnostics. This reduces unplanned shutdowns by using existing diagnostics available within your current control system.



FIELDVUE digital valve controllers coupled with the Smart Wireless THUM adapter power the PlantWeb® digital plant architecture by delivering more advanced field intelligence for better decision-making to help you achieve unparalleled efficiency and productivity.

Access to more comprehensive data enables you to:

- Extract the value of your FIELDVUE instruments by using them to their fullest potential.
- Uncover control valve health and performance issues before they affect the process.

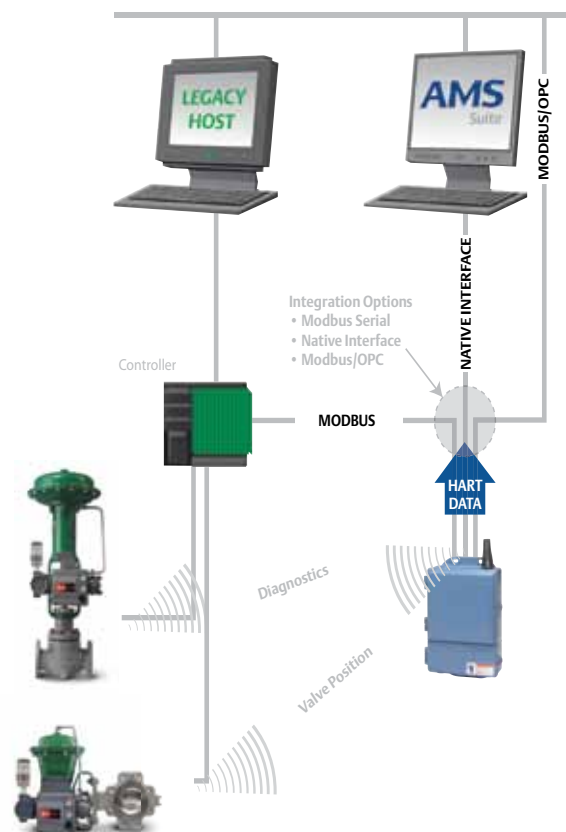


### EASY TO USE. EASY TO INTEGRATE.

The Smart Wireless THUM adapter allows you to wirelessly gain the full benefits of FIELDVUE instruments by unlocking stranded diagnostic information. In addition to the THUM adapter, all you need is a Smart Wireless Gateway and AMS™ Device Manager with the ValveLink™ SNAP-ON™ application.

All Emerson Smart Wireless field network devices can be integrated directly into your existing automation architecture without the need for up-front engineering, site surveys or additional software. Wired or wireless - the network looks the same to your operators.

For additional ease of use, AMS Device Manager provides more convenient access to information than what you have today. Emerson Smart Wireless technologies put valuable information within reach – easily and cost effectively – to give you better insights into what’s happening in your operation.



### Does the THUM adapter work on other Emerson products?

Yes, it can be installed on any Smart digital field device that communicates via HART 5, 6, or 7.

### Is the valve set point sent wirelessly?

No. Set point control remains wired with the 4-20mA signal from the control system.

### Besides delivering diagnostics, what else can the THUM adapter provide?

Devices Primary Variable and Status including valve position feedback can also be sent wirelessly. This measurement point can be mapped to the control system for trending and archiving.

### Do I have to upgrade my DVC6000 before installing it?

No. The THUM adapter is designed to work with all HART compatible DVC6000, DVC6200, and DVC2000 series digital valve controllers.



## UNLEASH THE FULL POTENTIAL OF YOUR FIELDVUE INSTRUMENTS

The Smart Wireless THUM adapter can transmit the four HART variables and additional HART status information at the user configurable update rate. Access to this new information enables you to fully optimize your operations for improved performance.

### Available Variables

Valve Travel Feedback  
Actuator Pressure  
Input Current  
Target Travel

### Important Status Information

Travel Deviation Alert  
Travel Sensor Failure  
Pressure Sensor Failure  
Supply Pressure Alert  
Drive Signal Alert

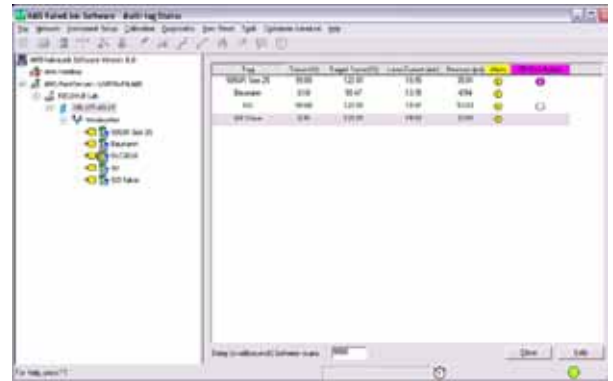
The THUM adapter can also be used to pass along diagnostic tests and large data files. This important valve performance and maintenance information can be viewed and analyzed through AMS VALVELINK SNAP-ON to AMS Device Manager.

## INFORMATION AND DIAGNOSTICS WHILE THE VALVE IS OPERATING

The THUM adapter can also be used to give device specific information, such as valve friction, pneumatic leaks (air mass flow test), and instrument problems (I/P and relay integrity test).

## TECHNICAL REQUIREMENTS

Voltage drop across THUM: 2.25V @ 4mA; 1V @ 20mA  
Power requirement: Loop powered, no batteries  
Update rate: 8 seconds - 60 minutes, configurable  
Wireless range: 100 meters, typical  
Compatibility: DVC6200, DVC6000, DVC2000



*In ValveLink™ Software, the status of all FIELDVUE™ instruments within the wireless network is displayed along with indicators of potential problems.*



*Rotary control valve with FIELDVUE DVC6200 digital valve controller and the Smart Wireless THUM adapter.*

© Fisher Controls International LLC 2011 All Rights Reserved.

Fisher, FIELDVUE, THUM, PlantWeb, AMS, ValveLink, SNAP-ON, and DeltaV are marks owned by one of the companies in the Emerson Process Management business division of Emerson Electric Co. Emerson Process Management, Emerson, and the Emerson logo are trademarks and service marks of Emerson Electric Co. All other marks are the property of their respective owners.

**Emerson Process Management**  
Marshalltown, Iowa 50158 USA  
Sorocaba, 18087 Brazil  
Chatham, Kent ME4 4QZ UK  
Dubai, United Arab Emirates  
Singapore 128461 Singapore  
[www.EmersonProcess.com/Fisher](http://www.EmersonProcess.com/Fisher)

The contents of this publication are presented for informational purposes only, and while every effort has been made to ensure their accuracy they are not to be construed as warranties or guarantees, express or implied, regarding the products or services described herein or their use or applicability. All sales are governed by our terms and conditions, which are available upon request. We reserve the right to modify or improve the designs or specifications of such products at any time without notice. Neither Emerson, Emerson Process Management, nor any of their affiliated entities assumes responsibility for the selection, use, or maintenance of any product. Responsibility for proper selection, use, and maintenance of any product remains solely with the purchaser and end user.

